



ARKIDECTURE

Architecture in the Classroom

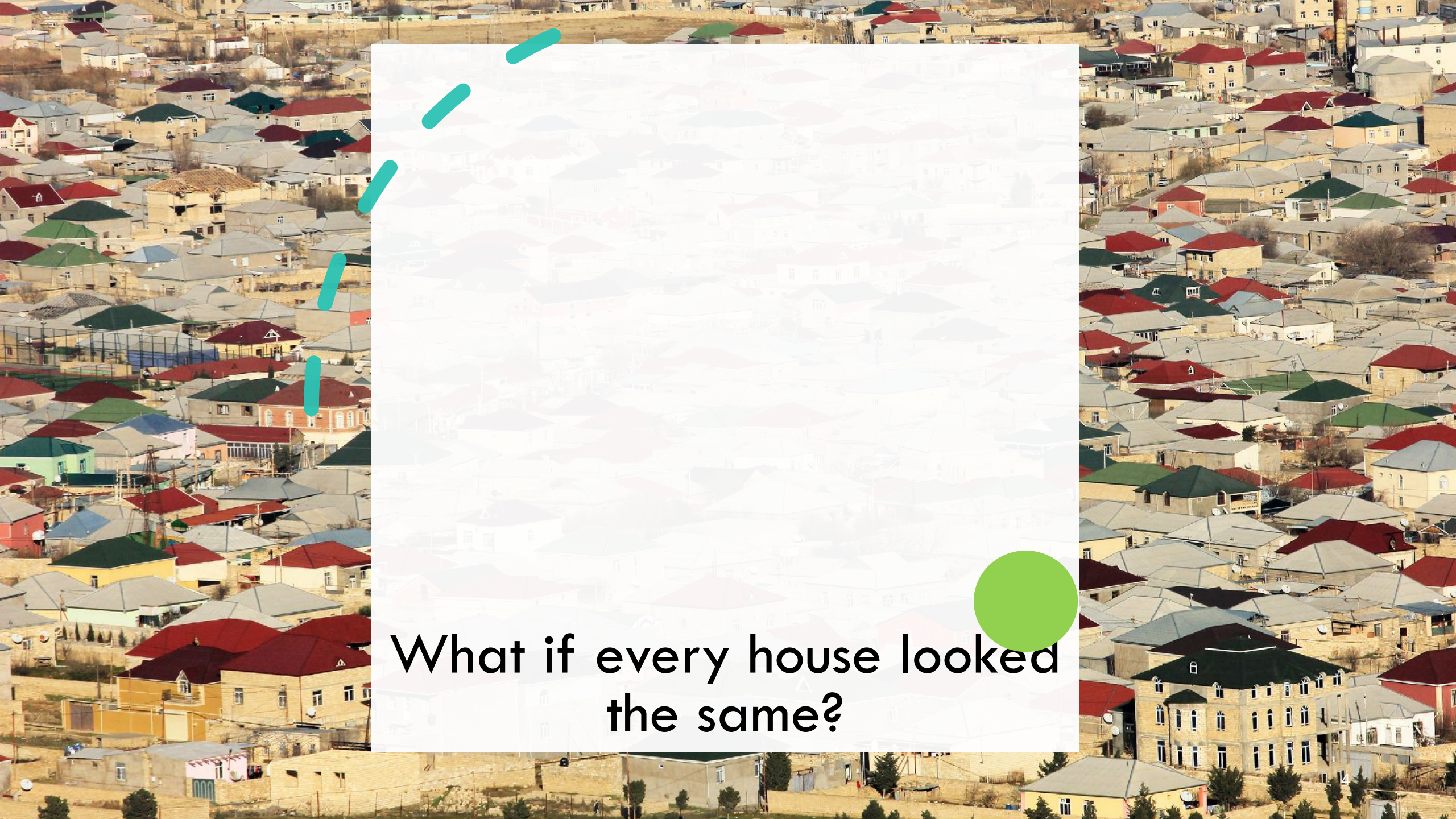


What does
architecture
mean to you?





What if every building
looked the same?



What if every house looked the same?

Why should you learn about architecture and design?

Shapes, color, and design make us feel a certain way.



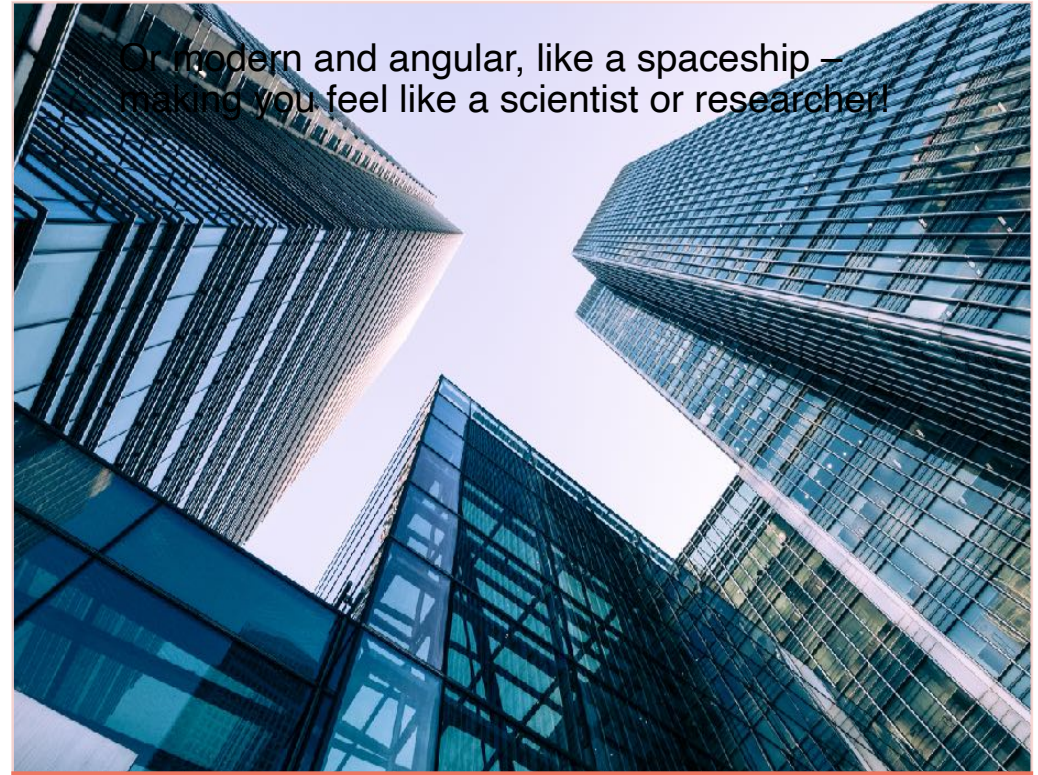
Would you
rather go in
here?

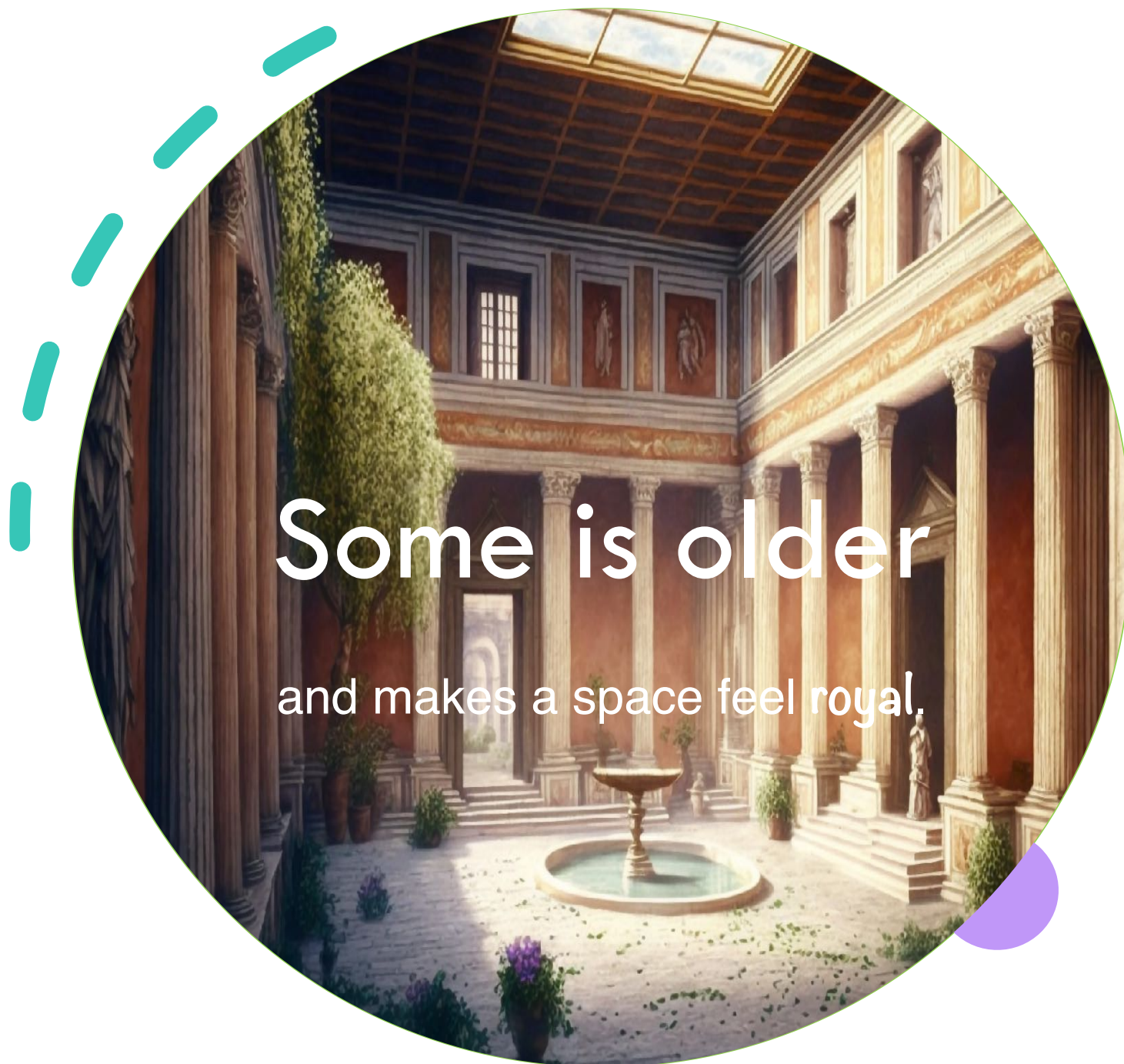
DO NOT BLOCK
EMERGENCY
EXIT
ONLY

Or in here?



Architecture can be...





Some is older
and makes a space feel royal.



What is one of the tools
an architect **must have**?

IMAGINATION





Is architecture just
for buildings?

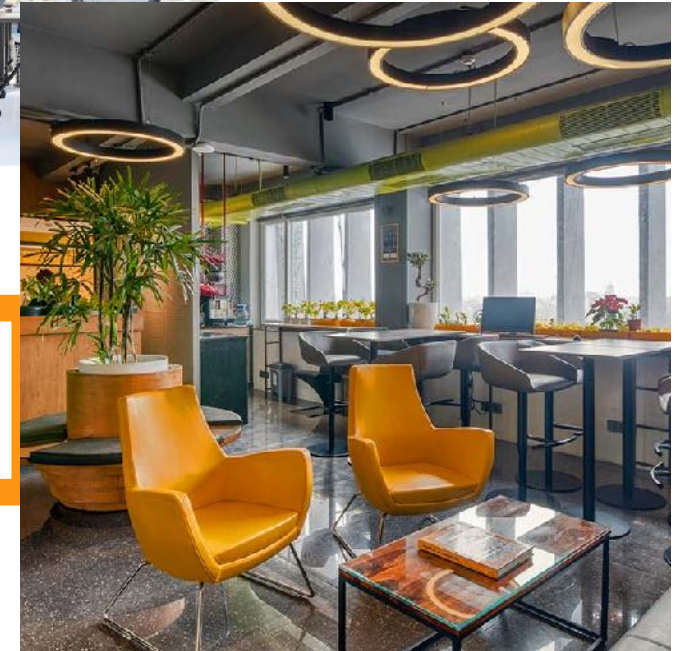
Landscape Architecture

Landscape architects work on things like site design, environmental restoration, town planning, and parks.

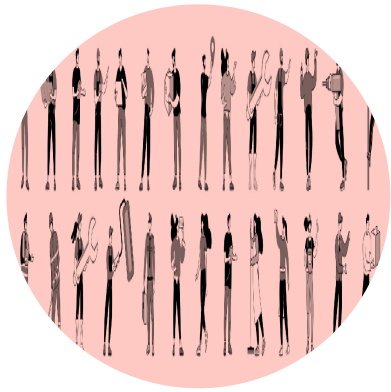


Interior Design

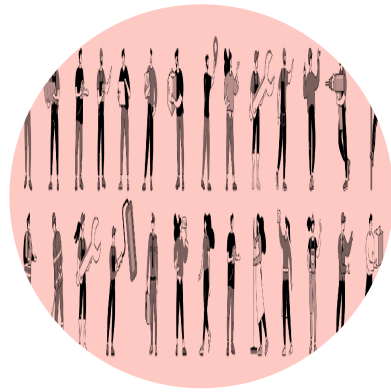
Interior designers work on things like space planning, interior finishes (paint, wall protections/ coverings, flooring, and more) and furniture selections.



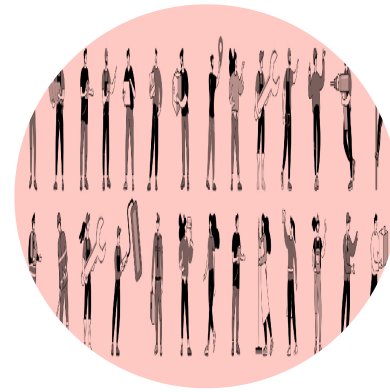
Architects work with engineers



Civil
engineer



Structural
engineer



Mechanical
engineer



Electrical
engineer

A photograph of two construction workers at a construction site. The worker on the left is wearing a red safety vest over a plaid shirt and blue jeans, with a red mobile phone clipped to their belt. The worker on the right is wearing a blue and white plaid shirt and blue jeans. They are both holding a white hard hat. The background is a blurred construction site with a brick wall and a bright sun flare in the center.

Maybe someday
you can be an
architect or an
engineer!

What would you design?

What
technology
would you
use?

How would
it make
people
feel?

What
would it
be made
from?

How would it
impact your
environment?

Could it
be
built?



Architecture in Iowa

A division of the Ar**KID**tecture Series
developed by the IAF.



Native Americans lived in the land we know as Iowa long before European explorers came.

European Settlers

- Came from Europe and neighboring states
- Main concern was survival
- Used materials available to build houses
 - Log cabins
 - Sod houses (“soddies”)





Eastern Iowa was settled first



Available material was trees



Settlers built log cabins

Sod Houses



Courthouses

Courthouses are beautiful examples of Iowa architecture. Many were a combination of different styles that were popular during that time.



Appanoose County
c1903



Clay County
c1900



Mahaska County
c1885



Polk County
c1900

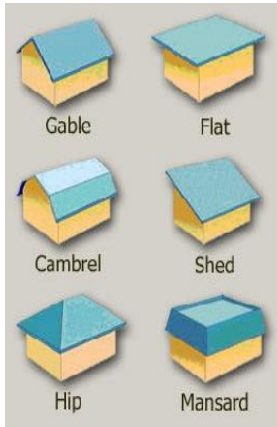
As Iowa became more settled, architecture became more decorative.



What differences do you see?



Typical Components of a House



Roof Types



Window Styles



Shingle Concrete Brick Lap



Board & Batten Stone Stucco Metal

Cladding Materials



Shingles

Dormer

Eaves

Brackets

Lap Siding

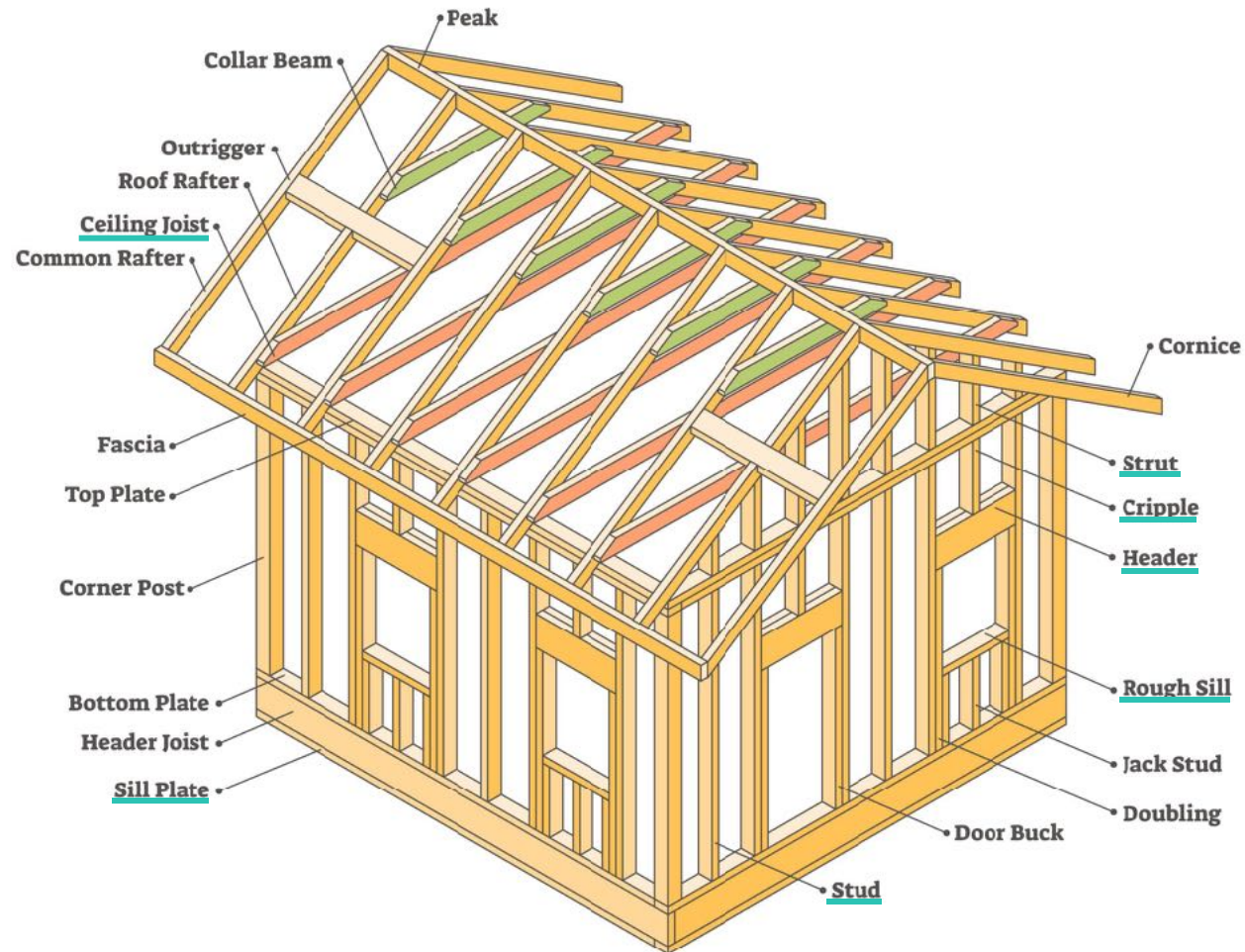
Balustrade

Column

Side Lite

Fascia

Typical Framing Components





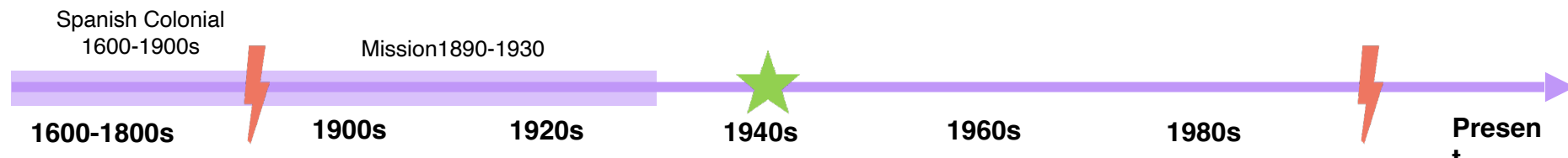
What Style Is Your Home?



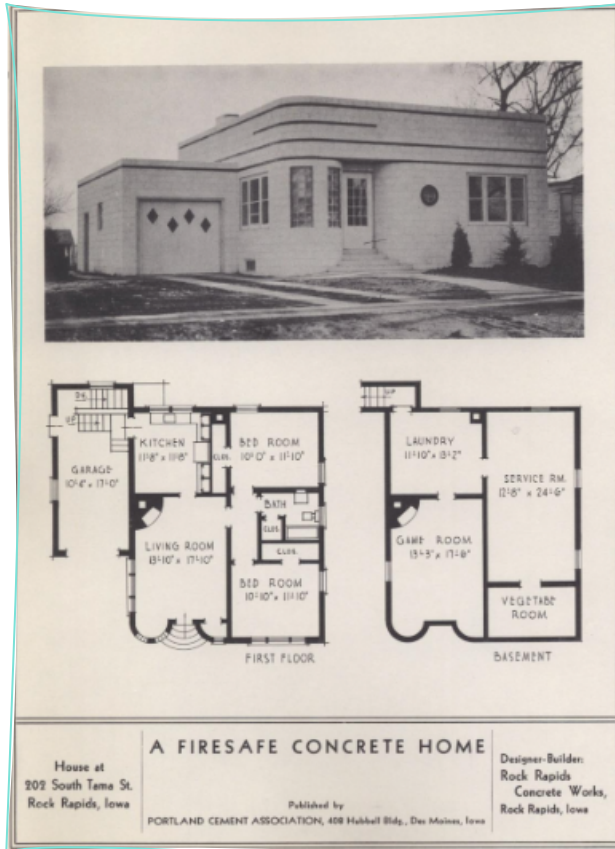
Spanish Colonial/Mission



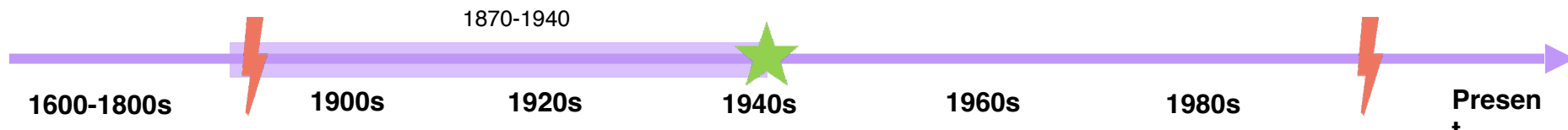
Windsor Heights, S. Of Grand,
Neighborhoods
Des Moines, IA



Fire Safe Concrete Homes



Beaverdale Neighborhood
Des Moines, IA



Colonial Revival



A COLONIAL HOME WITH SPACIOUS LIVING AREA E-627

Recessed entrance and shutters add a warm feeling to the exterior of this design. The floor plans are a picture of comfortable living featuring a large living room, dining room, kitchen with dining space and powder room on the first floor. Three large bedrooms and baths are included in the second floor plan.

DATA
Living Area Both Floors - 1,000 sq. ft.

FIRST FLOOR PLAN

SECOND FLOOR PLAN

Page 27



Tudor



Salisbury House & Gardens
Des Moines, IA
1923-1928



S. of Grand, Beaverdale, Waveland Park
Neighborhoods - Des Moines, IA
W. Des Moines, IA Neighborhoods



Prairie School



Walter Burley Griffin's
Arthur Rule House & Page House
Mason City, IA
1913



Harry D. Page house



Frank Lloyd Wright
Stockholm House
Mason City, IA
1918



Bungalows (Craftsman)



Craftsman
Detailing



N. of Grand, Roosevelt
Neighborhoods
Des Moines, IA
1905-1930



Spanish Eclectic



1931 Thomas Stoner
S. Of Grand Neighborhood
Des Moines, IA



After the turn of the century, mail order homes became a popular way to build a house.

Guaranteed Prices-No Extras



Gordon-Van Tine Home No. 506

Fine Sized Rooms in This 4-Bedroom Home

For Prices on This Home, See First Page.
Read Pages 9 to 10 for Full Description of Materials.

THE design of this house has proved itself admirable in all parts of the country—it is substantial, homelike and well arranged. The broad effect is emphasized still further by the design of the porch. The brick pedestals and newels, the good lines of the porch columns and the square balusters are all pleasing. A glance at the floor plan shows this to be unusual. The living room and dining

room extend across the entire front of the house, commanding a splendid view in almost every direction. These rooms are made practically one by the wide opening between them.

No room is taken up by a staircase at the front of the house. But instead it opens off the passage way, making it equally convenient to the living room, kitchen or den. Notice the room that may be used as a den or downstairs sleeping room. It is of good size with windows well placed.

The kitchen has surely been designed as a labor saver. Our kitchen new design "B" and space for the sink occupy the outer wall, and saves the worker of constant light. We wish also to call your attention to the fact that the 36-inch space that has been left for the range, is ample for even the largest of ranges.

From the kitchen one passes to the rear porch through a good sized entry which could easily be used for a refrigerator room or wash room. Of one may leave the kitchen by means of the grade door just under the stairway leading to the second floor.

Upstairs there are three fine chambers each with a big closet. Can you imagine three better planned bedrooms than these shown here?

Two or three windows for each sleeping room in a house are surely unusual, but here they are to be found and plenty of wall space for the proper placing of furniture besides.

The staircase leading to the house skated attic, the bath and the linen closet—the linen closet in the closeted area—open from the second floor hall also. The attic is floored and well lighted and ventilated by the window in the dormer.

As you consider this house, picture your own comfortable furnishings on the inside, and certainly you will decide that here indeed is worth to attract and satisfy you at an exceedingly low cost.

PAINT—Unless otherwise instructed, we will furnish clear gray paint for the body and white for the trim of this home.



For Plumbing, Heating, Lighting for This Home, See Last Pages of Book

Gordon-Van Tine Homes

The Speedy Economical Way to Build

Home. First and foremost among them is the now famous GORDON-VAN TINE notched plate. Each stud fits into its own notch. There can be no deviation—the walls must be set accurately. No measuring is necessary—accuracy becomes automatic. The notch compels accuracy. This is simply one of the means which we have taken to insure satisfaction and time saving in GORDON-VAN TINE Ready-Cut Homes.

And of course doing a big volume business as we do and standardizing this business has enabled us to lower our costs and consequently our prices to you. Quantity manufacture is the secret of low costs in all business. We have applied it to house building to your advantage.

Complete, Easily Understood Book of Instructions Furnished Free

To insure that everything will go right and you will gain all the savings possible we furnish you free with your order not only complete plans, but a book of instructions, telling you just what to do from unloading the car to setting the ridge board. Particularly important are the instructions on piling the materials. We exercise great care in packing it in the car so that it is unloaded in position, and instructions tell you just how to pile it so that every piece will be handy when you need it. Every step of the way, everything is clear and plain.

For the Man Who Is in a Hurry

The home-builder wants quick results and ease of erection, and sometimes the season of the year makes it necessary to build in double-quick time. The Erector and Roof Gutter Operator must get their houses built quickly to avoid extra interest and expense, and to get their money earning dividends as soon as possible.

Our "Ready-Cut Homes" fill this bill in every case, because they make it possible to build quickly and economically, and at the same time produce finished results, which will satisfy the most exacting man.

For the Man Who Does His Own Work

A man who is handy with tools can build one of our "Ready-Cut Homes." This is a broad statement, but it has been proven by actual experience that it is not difficult for a handy man to follow our complete plans and directions and nail this material in place. However, unless a man has had a fair amount of building experience he will usually profit by having a carpenter on the job to show him the numerous effort and time-saving "tricks of the trade" that only come from experience.

For the Carpenter

The contractor or carpenter who undertakes to build a Gordon-Van Tine "Ready-Cut Home," reaps the benefit of the week which we do in our factory. It is money in your own pocket to take advantage of our factory facilities. It is only reasonable to say that studs, joists, rafters and sheathing can be cut on a power-driven saw more cheaply than they can be hand work.

The method of construction is standard—just like any carpenter is accustomed to. There is nothing new to learn, to study over, or to estimate on. The material comes on the job in such shape that it goes right where it belongs.

If You Order Your House Not Ready-Cut

You can buy any Gordon-Van Tine home with Lumber Not Ready-Cut if you desire or find it necessary, with the exception of industrial cottages, summer cottages and garages which are only sold Ready-Cut.

If you order your house Not Ready-Cut the lumber shown on the specification pages 9 and 10 marked Cut-to-Fit will be furnished in standard mill-run lengths, selected so they can be cut to best advantage by carpenters on the job, but not ready-cut at our factory.

Remember, however, that you still get the advantages of Gordon-Van Tine plans; that all window and door frames will be shipped cut-to-fit, bundled and marked; all linen cases, kitchen cases and stair work will be shipped cut-to-fit, ready to set up, case fronts shod up; all doors will be mortised for locks and all hardware, tin work, nails, paint, etc., will be furnished.

The Gordon-Van Tine Not Ready-Cut home represents a great step forward from the usual material bought of the local lumber yard and the savings, while not as great as though you bought Ready-Cut, are still very important.

These Photos show how ready cut home No. 544 saved \$288.00 for A. G. Kittell, Editor Nebraska Farm Journal.



Material piled on building site—foundation in—November 3rd, 3 P. M.



Two days later—November 5th—two men on the job ready to start sheathing



November 7th. Rafters and dormer in place. Most of roof sheathed.



November 10th, 1:30 P. M. Porches up—roof sheathed—calling on shingles and siding.



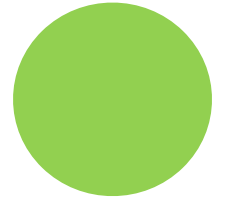
The House completed, although starting in November and handicapped by carpenter shortage, Mr. Kittell was able to move into his home before cold weather overtook him. He estimates that he saved at least \$250.00.



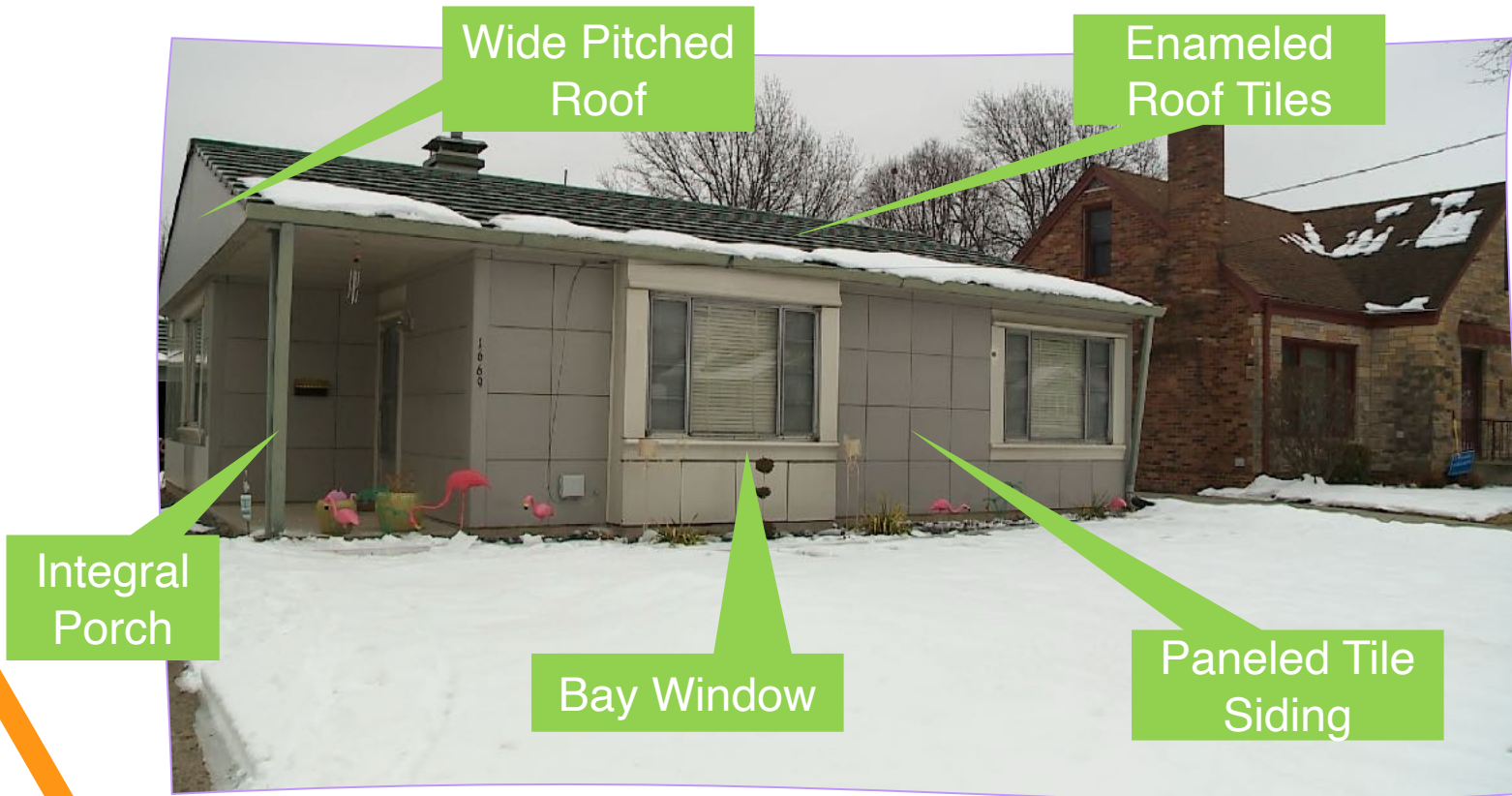
Post WWII ★

Architecture styles changed drastically after WWII (1939-1945)

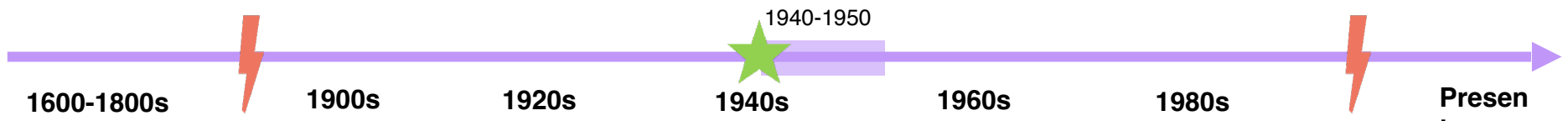
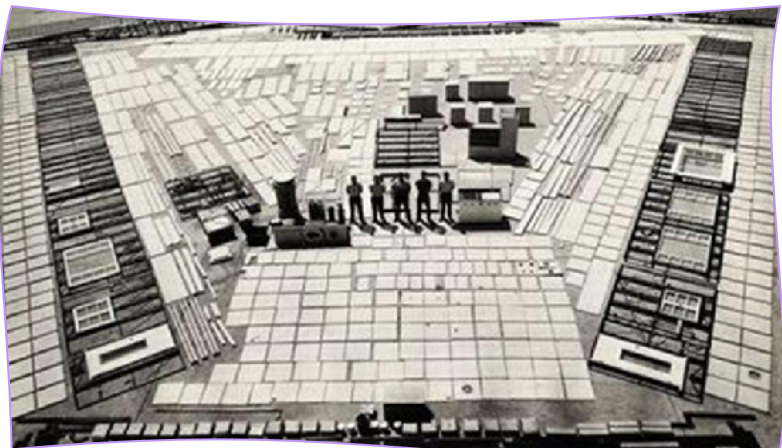
- Modern
- Streamlined
- Exposed structure



Lustron Homes



Beaverdale Neighborhood
Des Moines, IA
1950



Bubble Homes



Wallace Neff's
Bubble Home
W. Des Moines, IA
1980





What did you learn today?



Can you put these houses in the order they would have been built?





Can you put these houses in the order they would have been built?





Architecture Adventure

A division of the
Ar**KID**tecture Series
developed by the IAF.

Let's build a house!

Pick **1** shape to make the front wall of your house.

Remember your house can be any shape you want!



Let's build a house!

Pick **1** shape (try a triangle!) to make your roof.

Glue it on top of your front wall to keep things safe and dry.



Let's build a house!

We have wood and glass, so we can put in some windows.

Pick **1** shape to make a door.

Pick **3** shapes to make your windows.



Let's build a house!

Your house needs something unique.

Pick **1** shape to add a feature, like this chimney!

You can even add on to the sides of your house to make it bigger.



Let's build a house!

You need a front lawn!
Pick **5** shapes to make
landscaping.

Try using three in a row!



Let's build a house!

Time to grab some markers, pencils, or crayons.

Add details to your house like flower boxes, smoke from the chimney, and decorations to the front door.



Let's build a house!

Lastly, put your house on the map!

Color in the background to look like a sky, forest, ocean, or wherever you want to live.

Don't forget to add grass or sidewalk to your front lawn.



Great job, architect!





Architecture Adventure

A division of the
Ar**KID**tecture Series
developed by the IAF.

Let's build a house!

Start with 5 index cards. Try to build a house by leaning, stacking, or folding the cards.

Is it working?



Let's build a house!

You might need something strong to help hold your cards together. Use some tape to make them stick!



Let's build a house!

You might have the walls together, but is it standing up? Let's add structure!

Use popsicle sticks to strengthen your walls.



Let's build a house!

Now we have to keep
out the rain... let's
add a roof!
Try leaning some
index cards together
to form a triangle.

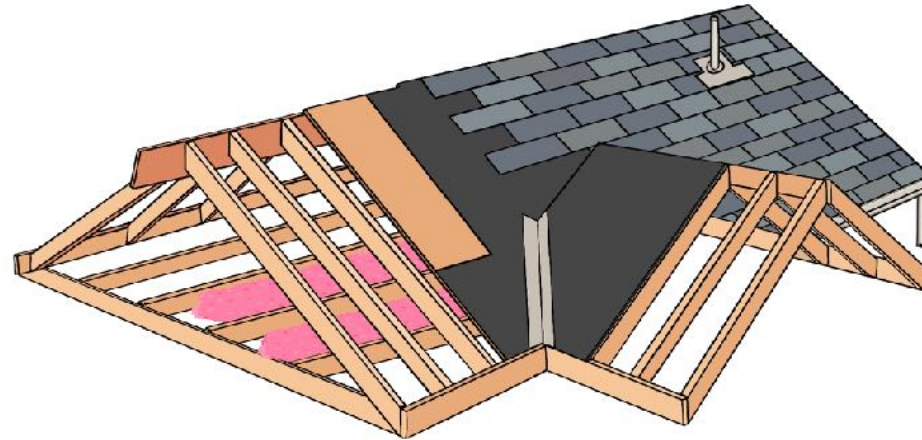
Is it working?



Let's build a house!

Your roof isn't very stable. What can you add to help hold it up?

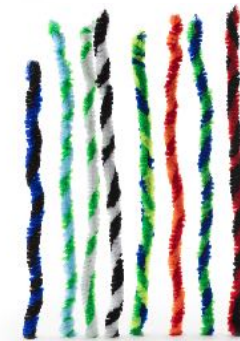
Hint: Try using popsicle sticks to make your triangle stronger.



Let's build a house!

Do you have the beginnings of a house?

It's time to make it yours! Use markers, shapes, and other supplies to add the details.



What can you come up with?



Thank you

